



Online Fundraiser Auction

DLMS FarmGate Timed Online Sale

Sale Opens July 23, 2021

Closes Racehorse Style

July 24th, 2021 at 7:00 pm MST





Message from the FCSF President

Welcome to the 2021 edition of the Friends of Canadian Simmental Association's Annual Foundation Auction. On behalf of the board of directors we are very excited to be back this year running our auction from July 23-24th as timed DLMS FarmGate sale.

Our foundations primary role is breed research, educational scholarships, bursaries and youth development. All youth scholarships are financed and administered by this Foundation which also provides annual fundraising for the YCSA at national events.

Thank you so much to all the donators of this year's auction, we have an excellent line up of items to bid on this year.

Thank you to the CSA staff, the Foundation board and all the volunteers for making this event happen.
From myself and all the FCSF board members, thank you for participating in this year's auction and we can't wait to see you all in person next year in Portage La Prairie, Manitoba.

Ken Lewis

FCSF President



Message from the CSA President

On behalf of the Canadian Simmental Association I would like to welcome and thank everyone for supporting this year's annual foundation fundraising auction.

Over the years this event has grown into one of the biggest cattle fundraising events in Canada and although we are not gathering in person the quality in this year's items will not disappoint.

This is the major fundraising event for the foundation, funds raised here will allow the FCSF to continue the work they do in supporting youth, research and development.

Thank you so much to all this year's and past donators, sponsors, industry partners and everyone who has purchased items in the past.

Marlin LeBlanc

CSA President

FCSF Board of Directors 2019-2022



Bruce Holmquist
Cell: 639.314.4613

Glenn Wotten
Cell: 705.879.3061

Ron Nolan
Retired 2020

Scott Matthews
Cell: 819.993.5187

Garth Rancier
Cell: 780.385.5313

Mark Shologan
Cell: 780.699.5082



Deanne Young
Cell: 780.542.0855



Roger Deeg
Cell: 403-934-4585

Rae-Lee Erickson
CSA Admin Assistant

Marlin LeBlanc
Treasurer
Cell: 306.421.2470

Ken Lewis
President
Cell: 780.818.3829

Barb Judd
CSA Office Manager

Brian Bouchard
Vice-President
Cell: 403.813.7999



FCSF Sale Staff Contacts

FCSF Past Auctioneer Dan Skeels.....403.783.1217
 FCSF Past Ringmen Darryl Snider.....780.385.5561
 Jim Pulyk.....780.787.0646

Sale Consultants of the Simmental Industry

Bouchard Livestock International
 Brian Bouchard.....403.813.7999
 Chad Lorenz.....403.896.9585

Bohrson Marketing Services

Scott Bohrson403.370.3010
 Taylor Richards.....306.821.4169
 Rob Voice.....306.270.6082
 Geoff Anderson.....306.731.7921
 Martin Bohrson.....306.220.7901
 Jaxon Payne.....306.830.0456
 Jay Sibbald.....403.899.2625
 Cody Haney403.559.8809

First Class Cattle Marketing

Darnell Fornwald.....403.795.8030
 Shay Martindale.....780.812.4581
 Jonathan Karsin.....204.870.0329

T Bar C Cattle Company

Chris Poley306.220.5006
 Shane Michelson.....403.363.9973
 Ben Wright.....519.374.3335

Transcon Livestock Corp

Jay Good403.556.5563
 Glenn Norton780.542.0634
 Darren Paget403.323.3985

OBI Livestock

Mark Holowaychuk.....403.896.4990
 Roger Peters.....403.828.9815

DLMS Internet Bidding

Mark Shologan.....780.699.5082

Thanks to all of the Sale staff that has supported the FCSF in 2019. We look forward to being back in person for 2022. Please feel free to call any of the Sale staff or the FCSF Board of Directors to bid on your behalf if you do not want to bid yourself online for the 2021 auction.

Terms of Sale

All payment are made directly to the
 Friends of Canadian Simmental Foundation
 #13, 4101-19th St. N.E. Calgary, AB, T2E 7C4
 Ph: 403.250.7979 Email: fcsf@simmental.com

Following the sale you will receive an invoice by email. Please make sure you watch for this invoice as it may end up in your junk/spam folder. If you do not see the invoice by the end of day Monday please call the office to receive a second copy.

• Payment Options

1. Send a cheque to the FCSF following the sale
2. Payment processed to the Credit Card on your file with CSA

• **Purchaser is responsible for any shipping costs associated with purchase. After payment has been made received the donor and purchaser will be emailed paid release notification. At this point shipping / pickup can then be arranged between the two parties.**

• No guarantees are made, lots are sold as is with the description supplied by the donor.

Auction proceeds directly support Youth Initiatives and Scholarships presented through the Friends of Canadian Simmental Foundation - FCSF Charity # - 82695 3291RR0001

Online Fundraiser Auction

Sale for 2021 will be 100% Timed Online

DLMS FarmGate Timed Auction

www.dlms.ca

Sale Opens July 23, 2021 at 9:00 am MST

Sale Closes Racehorse Style

July 24th, 2021 at 7:00 pm MST

How to bid online with DLMS FarmGate

First time FarmGate users:

- First time users go to DLMS.ca scroll to find the sale page, after you have navigated to the sale page select the REGISTER button. Fill out the registration form to sign up for a free user account and it allows you to select a username and password for use on all Farm Gate Timed auctions. (please note due to some of the text notification features the DLMS FarmGate Time Auction Site requires a new account separate account from your DLMS Live sale site)

- After you create your FarmGate account you will receive a txt message with a pin code to verify your account.

- On your first log in to FarmGate Timed auctions we recommend you go to your profile and confirm your notifications are set to YES. This allows the site to send you text and/or email notifications when you are outbid and if there is activity on your favourite lots.

How to Bid in a Timed Auction

Now that you are logged in and your account phone number / email is verified you are able to bid on an upcoming sale. Simply find the lot you are interested in bidding on. After you have found the lot there are 2 options for bidding on the lot.

- Place Next Bid – to place the next bid on the item, you see the amount in the first box, you simply click the “Place Bid” button and after you review the bid and agree to the terms and conditions your bid will be placed.

- Max Bid Amount – to place a max bid you put your max bid in the second box listed as “Max Bid” on the item, and then click the “Place Bid” button and after you review the bid and agree to the terms and conditions your bid will be placed as the next bid. With the Max Bid placed the computer will then keep you as the high bidder to the max amount you have placed. This can be a great feature if you are not able to give 100% attention to the sale close out and protect your interest so you do not miss out on any lots you want to purchase.

The Max Bid amount is completely confidential from the seller during the sale process.

Example of How the Max Bid Works - If the lot has a \$2000 bid on it and you place a proxy bid of \$3500 into the system, the computer will bid \$2100 for you but if some one else bids \$2200, the computer will again bid for you, this time at \$2300. The system will look after your interest to a maximum of \$3500. If another bidder is on at \$3600, your proxy will no longer be effective and you will no longer have the winning bid on this lot without once again logging in and bidding again or moving your attention to a second lot of interest. Please note that in some cases a lot value can change very quickly if 2 max bids are placed on the same lot competing against each other.

Watch List Feature

If you have items in multiple auctions or only a few from the same auction that you want to watch without having to scroll through the entire list you can add the lots to your watchlist. On each lot you will see the “eye” button beside the bid button, by clicking this “watchlist” Icon that item is added to your personal watchlist for easy viewing of just your favorite lots in this sale or on the entire site.

What is Racehorse Style Close?

Racehorse style sale close is when the entire sale stays open in extended bidding. This type of sale allows you as the bidder to change to a different lot within the same sale if the bidding has gone in to extended bidding.

How will Extended Bidding work? When we get to the closeout end time the clock for close extends with any bid placed after soft close time the clock will extend. This type of extended bidding turns the end time to more of a soft time. Extended bidding allows bidders to compete in lots like a real auction and give all bidders the same time to make a decision and eliminate any one from sniping the last second bid. Always follow the clock to see how much time remains in the sale you are interested in. It is recommended that you bid early in the extended bidding to keep the sale from going to long.

Bidding Close & Follow-up

After the clock has gone to “ENDED” and no bidding has occurred, and the clock goes to 0 the computer will declare the sale finished. Please note as the clock goes counts down to 0 you may see “PENDING” at this time the computer is confirming there are not last second bids on the network in case of poor internet connections to eliminate a last second snipe bid. The sale is not closed until the clock is listed as “ENDED”. Following the close typically within 24 hours of the sale close the sale consignor will contact all winning bidders to arrange payment, transfer of pedigrees and delivery/pick up of your lot. Or as the winning bidding you can contact the sale consignor / sale manager to confirm payment instructions.

For help with bidding or creating an account please call any of the DLMS Purebred Team:

Mark Shologan 780.699.5082 | Jill Renton 780.603.1636
 Cassidy Mathews 403.971.6055 | Dacie Przekop 780.656.5513
 Stacy Young 780.718.0622 | Melissa McRae 204.573.9903





Who is the Friends of Canadian Simmental Foundation

The Friends of Canadian Simmental Foundation (FCSF) is a not-for-profit registered foundation dedicated to scholarship and educational support of youth in the business of agriculture and Simmental cattle.

The Foundation is governed by a board of directors who are heavily involved in the Simmental industry and who have a vested interest in educating youth, developing leadership, and encouraging young people to be a part of the agriculture industry.

The Friends of Canadian Simmental Foundation belongs to all of those that had the vision to believe in bringing the Simmental breed to Canada, those that supported and have developed it over the past 52 years, and those that see the value it brings to the generations of the future.



Focus of the Friends of Canadian Simmental Foundation



Scholarships - The FCSF administers scholarships for youth who are involved in Canadian agriculture. Assisting in the development of youth with a focus on advancing their understanding of agriculture is a very important component of the FCSF.

Youth Development - The FCSF supports youth programs such as the Young Canadian Simmental Association (YCSA). The YCSA is one of the most progressive and dynamic agricultural youth organizations in Canada. It is open to anyone 25 years and under who then have the opportunity to participate in various activities across Canada. YCSA members learn important skills including public speaking, marketing and communications which develop strong and dynamic leaders for not only our industry, but society as a whole.

Research and Development - The FCSF is actively engaged in supporting research to benefit the agriculture industry in Canada. This work is focused on improving the Canadian beef industry by enhancing production efficiency, product quality and profitability.

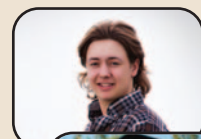


What the Friends of Canadian Simmental Foundation is doing

FCSF Scholarships

The Friends of Canadian Simmental Foundation is honored to administer 5 exciting post-secondary scholarships. The Friends of Canadian Simmental Foundation recognizes the importance of supporting youth in agriculture and their goals of advanced education. The scholarship program is one of the ways that the Foundation intends to support youth and the future of the livestock industry. In 2019 the FCSF will award \$12,000 in scholarships.

The current 2018 winners are listed on page 30 or go online to www.simmentalfoundation.com to find past winners and the current application form that can be used for all three of the scholarships for the 2019-20 academic year.



Youth Development



The FCSF supports youth programs such as the Young Canadian Simmental Association (YCSA). The YCSA is one of the most progressive and dynamic agricultural youth organizations in Canada. It is open to anyone 25 years and under who then have the opportunity to participate in various activities across Canada.

For 2019 the FCSF will directly support the YCS with a portion of the Auction process going directly to their program to assist in the operation of their 2019 – 20 activities.



How to Contribute to the Friends of Canadian Simmental Foundation

The Friends of Canadian Simmental Foundation value all of those that support the philosophy and work the Foundation is committed to. With the FCSF having Charitable Tax Status we are able to provide those who donate to the Foundation with a charitable tax receipt. FCSF supports the programs and activities that not only benefit the Agriculture Industry today but also helps establish the future of the agriculture industry for tomorrow's youth.

In addition to donating or purchasing at the Foundation Fundraising Auctions each year, you can also use some of the other traditional methods of giving include such as: cash donations, sponsorships and memorials.

Contact any of the FCSF Directors about making a donation or send your gift to the Friends of Canadian Simmental Foundation today.

Please make your check payable to:
Friends of Canadian Simmental Foundation
#13 - 4101 - 19th St. NE
Calgary, Alberta Canada T2E 7C4 Ph: 403-250-7979





A look back at 40 Years of YCSA





"Friend of the Foundation"

Each year the Friends of Canadian Simmental Foundation designates a "Friend of the Foundation." This individual / family has generously donated a bred heifer to the Foundation Auction. Their commitment to the Foundation through this gesture is greatly appreciated and recognized throughout the year.

2012 Heifer Donator / Buyer

~ Gibbons Farm ~ Vaughn and Cindy Gibbons - ~ More Bros. Simmentals ~ Everett More

2013 Heifer Donator



R Plus Simmentals

2014 Heifer Donator



Bonchuk Farms

2015 Heifer Donator



Elm Tree Farms

2016 Heifer Donator



McMillen Ranching Ltd.

2017 Heifer Donator



Tryon Simmentals

2018 Heifer Donator

Lewis Farms

Lewis Farms

2019 Heifer Donator

Barlee Simmentals

Barlee Simmentals



***Thank you to retiring director Ron Nolan
for his longtime commitment and
dedication to the
Friends of Canadian Simmental Foundation
& YCSA Fundraiser Auctions from 2006 ~2020***

1

Dutch Auction Donation Bred Heifer

Crowe Abigail 46H

The Donation Heifer tickets will sell at \$20 per ticket - same as other years if you buy \$500 you get 25 tickets in the draw. Simply go to the online sale page and bid on your tickets like other lots in the sale.

You can also order your tickets by contacting any of the FCSF board of Directors or sale staff to have tickets purchased on your behalf. After the sale is over a full list of ticket donators with amounts purchased will be posted on the FCSF facebook page. The draw for the heifer and the winning ticket will be made on Facebook live on the FCSF Facebook page - Monday July 26th at 7:00 PM MST. Be sure to watch the draw!!



5 Feb2020 CROW 46H BPTG1321258
 MR NLC UPGRADE U8676 WS PILGRIM H182U
 Sire: MR CCF VISION Dam: SWSN SISTER ABIGAIL 1E
 GCF MISS ELSA WAGR PANARAMA 204Z
 AI Bred March 26 to SWSN CASH FLOW 81E - Confirmed Safe to AI June 1
 Exposed to Stewarts Excluding April 5

ACT	BW	EPD	CE	BW	WW	YW	MCE	MWW	MILK
	89 lb		9.6	3.8	85.6	118.5	4.8	62.5	19.7



Dam: SWSN Sister Abigail 1E
 Pictured as a Heifer Calf

Brent and Scott Crowe, along with their families, operate a mixed family farm one mile south of Gilbert Plains, MB. In 2010, while starting young families, the decision was made to disperse the family dairy, but with livestock in the blood, purebred Simmentals were purchased from Robb Farms. Over the last decade, the Crowe's have sourced elite bulls and females from across Canada and in the United States. They use AI and embryo programs to enhance the quality of their herd. Select females are marketed through consignment sales and new this year bulls will be marketed in the First Annual Crowe Bros. Simmentals Online Bull Sale. They have slowly started to exhibit cattle at Manitoba Ag Ex and Agribition with plans to be more involved in this great industry.

Crowe Bros.

Simmentals

Donated By:
 Crowe Bros. Simmentals
 Brent & Scott Crowe Families
 Box 337 Gilbert Plains, MB R0L 0X0
 Brent 204.548.2401 or 204.572.7109
 Scott 204.548.4070 or 204.648.4247

CROW46H Crowe Bros. are proud to donate a bred female from the top of our program to the Friends of the Canadian Simmental Foundation Auction. Crowe Abigail 46H is sired by Vision, a bull that has done a lot in establishing our program producing commercial bulls, high selling females, and donor cows. The dam of 46H might be as exciting as any, SWSN Sister Abigail is a full sister to the famous PROFIT bull. A cow with so much potential and her value will only be enhanced with more progeny. Crowe Abigail 46H was bred March 26 to SWSN Cash Flow 81E and confirmed pregnant. She is a female that represents our program well and we feel she will be an exciting female in production.

2

3 Embryos - Blacksand Linette 854U x IPU Bentley 81F



Blacksand Sadie 4Z -
Daughter of Linette 854U



Sire: IPU Bentley 81F

Resulting Pedigree of Embryos Purebred Simmental

WHEATLAND BENTLEY 630D
Sire: IPU BENTLEY 81F - BPG1253150
CLAYHILL FANCY LUCA 39A

SPRINGCREEK LINER 104S
Dam: BLACKSAND LINETTE 854U - BPG696926
BLACKSAND SADIE 22206S

Blacksand Linette 854U and her daughter, Blacksand Sadie 4Z, were our top selections of the entire offering at the legendary Blacksand Dispersal and they were two of the high selling lots that day. This homo black homo polled donor is a direct daughter of the famed 104S and she ranks in the top 1% of the breed for API, top 5% for CE and the top 25% for weaning weight. Bentley is a \$92,000 high seller and has been highly sought after by many progressive operations with semen bringing over \$400/straw at public auction and progeny at the top end of sales last fall and this spring at \$33,000 and \$25,000. We dug

deep for this Foundation sale and this mating offers beautiful phenotype, a great pedigree and is complimented with outstanding EPD's.

Embryos are qualified for Canada and the USA



Rancier Farms
Garth Rancier
780-385-5313
www.rancierfarms.com



Donated By:

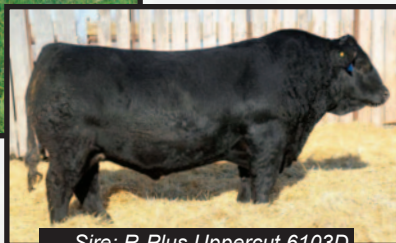
Canadian Donors
a division of Bohrsen Marketing Services
Scott Bohrsen
403.370.3010
www.bohrson.com

3

3 Embryos - R Plus Uppercut 6103D x Jetstream Bright N Classy



Dam: Jetstream Bright N Classy



Sire: R-Plus Uppercut 6103D

Resulting Pedigree of Embryos Purebred Simmental

MR TR HAMMER 308A ET
Sire: R PLUS UPPERCUT 6103D - BPG1189994
MISS R PLUS1017Y

JF MILESTONE 999W
Dam: JETSTREAM BRIGHT N CLASSY - BPTG1123419
RTC/JETS UPPER CLASS 40U

This cow created the wow factor in the show ring including Champion Female at the Royal Winter Fair in 2015. Uppercut was the \$51k high seller from the 2017 R-Plus bull sale to OBI/SIBL/ CRM and is the real deal. He is a true powerhouse with a proven pedigree and struts his stuff with the presence of royalty. Exclusive mating offered here with excellent ROI potential



R-Plus Simmentals
Marlin Leblanc
306-421-1270



Donated By:
Jetstream Livestock
Shane Williams
519-938-1220

4

3 Embryos - SVS Tycoon 841F x IPU 317Z Ms. Pashmenia 26E



Dam: IPU 317Z MS. PASHMENIA 26E



Sire: SVS TYCOON 841F



Daughter of Pashmenia 26E

Resulting Pedigree of Embryos Purebred Simmental

SVS BROOKS 669D
Sire: SVS TYCOON 841F - PG1235896
SVS RED ANNIE 411B

CCR COWBOY CUT 5048Z
Dam: IPU 317Z MS. PASHMENIA 26E - BPG1217016
IPU 403P MS THROTTLE 317Z

We are proud to offer new and exciting embryos that we just made from the ever popular Tycoon and our cornerstone donor, IPU Pashmenia 26E. With Tycoon semen now depleted with none available and his sons adding value to every bull sale this past spring that marketed them, we feel he will be an ideal cross with Pashmenia 26E. She was a past \$19,000 high seller from the outstanding Barry LaBette program and in her young production years has already produced a \$9,500 high selling daughter in last falls SimPower Sale. In order to step up and donate to such a noble cause, we wanted to offer our very best and this is a mating we have the utmost confidence in. Embryos located at Abbotsford Vet Clinic



Donated By:
KT Ranches
Kevin & Tracey Carson
250.878.1000

5

3 Straws of Wheatland Next Century 43H

24 Jan 2020

LER 43H CSA # PG1341336

CCLT ALLIANCE 91C
Sire: WHEATLAND RIVAL 8125F
WHEATLAND LADY 5213C

STF UNANIMOUS UP26
Dam: WHEATLAND LADY 123Y
WHEATLAND LADY 637S

ACT	BW	Adj WW	Adj YW	EPD	CE	BW	WW	YW	MCE	MWW	MILK
	89 lb	940 lbs	1538 lbs		11.1	1.5	75.6	94.8	4.6	58.5	20.7



Simply put, Wheatland Next Century is the most complete Simmental breeding piece that we have seen in years, maybe ever. The bull himself is flawless in his phenotype. He is powerful, blood red, flawless on the move, extremely stout, extremely long bodied, and walks at top of a perfect foot. Definitely a bull that impresses even the most critical of cattle producers. Next Century is an individual that is incredibly difficult to fault but what makes him truly great is the cow families that are behind him on both sides of his pedigree. When Riley toured us it was absolutely astounding how many great cows were directly related to Next Century with his mother and paternal grand mother being 2 of the very best cows we have seen in the Simmental breed. This will be the last semen to sell in 2021. Homo Polled.



Donated By:
First Class Marketing
Darnell Fornwald - 403.795.8030
www.firstclasscattlemarketing.com

6

3 Straws of R Plus Reddington 0143H

11 Feb 2020

LRPS 0143H CSA # PG1339212

NCB COBRA 47Y
Sire: R PLUS VENOM 4006B
IPU MS. TULA 104Z

R PLUS REDGE 8018U
Dam: MISS R PLUS 6168D
MISS R PLUS 1033Y

ACT	BW	Adj WW	Adj YW	EPD	CE	BW	WW	YW	MCE	MWW	MILK
	92 lb	852 lbs	1490 lbs		7.0	5.2	96.1	139.3	3.8	74.9	26.8



R Plus Reddington 0143H is the \$161,000 phenom that has taken the Simmental breed by storm and created as much excitement as any red sire has in the industry. As impressive as you can make one in the flesh and he is backed by an outstanding dam that is productive with a strong foot and good udder. Reddington is a bull that will offer valuable attributes to all that utilize him as he checks off all the boxes to evolve into a great breeding piece in the Simmental breed.



Donated By:
Black Gold Simmentals - The Noble Family
Randy 306.821.0113 Ryley 780.522.8385 Toby 306.821.2071
www.blackgoldsimmentals.com



Canadian Sires
a division of Bohrsen Marketing Services
Scott Bohrsen 403.370.3010
www.bohrsen.com
KT Ranches
Kevin & Tracey Carson 250.878.1000

7

3 Straws of SVS Rancher 42H

21 Jan 2020

TLAS 42H CSA # PG1319852

SVS BROOKS 669D
Sire: SVS TYCOON 841F
SVS RED ANNIE 411B

WS BEEF KING W107
Dam: HLTS SAMMIE
BRANT DONT YA LOVE ME

ACT	BW	Adj WW	Adj YW	EPD	CE	BW	WW	YW	MCE	MWW	MILK
	105 lb	884 lbs	1529 lbs		7.5	3.9	100.0	148.7	3.8	76.6	26.6



The \$110,000 bull that is one of the most exciting bulls to sell in the breed in 2021. Rancher has large, dark, impressive feet and out of a near perfect awesome udder donor who is beautiful in her design. His now deceased sire is the hottest bull in the business and we feel Rancher could be the most exciting power bull in our sire line-up.



Donated By:
Meadow Acres Simmentals
The Fornwald Family
Dustin Cell 306.487.7510
Kirsten Cell 306.487.7514
Blair Cell 306.487.7662
www.meadowacressimmentals.com



Canadian Sires
a division of Bohrsen Marketing Services
Scott Bohrsen 403.370.3010
www.bohrsen.com

8
A-B

2 Packs of 5 Straws of MRL Power Play 40H

12 Jan 2020

MRL 40H CSA # BPG1309038

COME AS U R RED ROCKET
Sire: RUST BULL 18C
BEECH BROS YARA 122Y

LFE THE RIDDLER 323B
Dam: MRL MISS 6681D
MRL MISS 2490Z

ACT	BW	Adj WW	Adj YW	EPD	CE	BW	WW	YW	MCE	MWW	MILK
	100 lb	884 lbs	1513 lbs		3.0	5.7	102.3	156.3	2.3	78.4	27.2



This is one of the stoutest black hid Simmental bulls to sell in the 2021 spring bull sale season. When the Simmental breed was introduced to North America a number of leading Simmental operations would wean bull calves at 1000 pounds off of elite females. Power Play would be one of the very few calves sold in the spring of 2021 to be able to claim that status. If you want to assist your seedstock producers in improving their commercial customers bottom line this calf needs to be in your bull battery. A true beef bull.



Donated By:
Bouchard Livestock International
Brian Bouchard 403-813-4999
www.bouchardlivestock.com

McMillen Ranching
Lee McMillen 306.483.8067
Dave McMillen 306-483.8660
Jim McMillen 306.483.7986
www.mrlranch.com

9
A-B

2 Packs of 5 Straws of LFE Stratton 3094F

16 May 2018

LFE 3094F CSA # PG1250736

LFE BEER MONEY 811Y
Sire: LFE TRIUMPH 816A
LFE BISS BS SUNSHINE 609X

LFE SPRINGSTEEN 449Y
Dam: LFE RS AMBER 2140B
LFE RS AMBER 41W

ACT	BW	Adj WW	Adj YW	EPD	CE	BW	WW	YW	MCE	MWW	MILK
	84 lb	799 lbs			7.3	2.7	77.6	115.5	2.7	58.1	19.3



On behalf of Lewis Farms and Robb Farms we are excited to donate 2, 5 dose packages on LFE Stratton for this FCSF Auction. Stratton was the feature red baldy in the 2020 Lewis Farms Bull Sale. Purchased by Robb Farms for \$52500. The first calf crop is on the ground and can be seen at Robb Farms, Lewis Farms and R Plus Simmentals. Stratton calves are born with ease and will add substance and the sought after baldy face. Buy with confidence and support a great cause.

Lewis Farms

Donated By:
Lewis Farms
Ken Lewis 780.818.3829
Kyle Lewis 780.220.9188
www.lewisfarms.ca

Robb Farms
Trevor Robb 780.205.0226
Gary Robb 780.205.1744

10
A-B

2 Packs of 5 Straws of SAS Infra-Red H804

31 Jan 2020

FGN 804N CSA # PG1351876

WS ALL-AROUND Z35
Sire: WS ALL ABOARD B80
WS LITTLE SISTER W37

ERIXON BITTEN 203A
Dam: SAS BRI 803E
SAS BRIANNA B803

ACT	BW	Adj WW	Adj YW	EPD	CE	BW	WW	YW	MCE	MWW	MILK
	84 lb	862 lbs			12.2	2.4	108.4	172.5	6.3	79.2	25.0



SAS Infra-Red H804 combines power and cool. He walks and talks like a herdsire should and is able to combine real world data with a phenomenal EPD set, to make Infra-Red a must use sire.



Donated By:
Springer Simmentals
Jeff & Linda Springer 641.330.6654
www.springersimmental.com

S & J Farms
Steve & Jessica Campbell
www.sjfarmsmn.com

11

A-B

2 Packs of 5 Straws of Saint John Gatton 38G

28 Aug 2019

38G ASA #3690252

FSS MAXIMUS
Sire: FSS POLLED HENDRIX
FSS BLAIRSTOWN

OPF LYDAS LEGACY FF
Dam: OPF ERIKA FF
CRIMSON MISS ERIKA FF



ACT	BW	WW	YW	EPD	CE	BW	WW	YW	MCE	MWW	MILK
	89 lb	738 lbs	1320 lbs		11.0	2.5	68.1	95.8	7.2	70.0	36.0

Saint John Gatton 38G pedigree is built with proven genetics and is a true blend of maternal and power. A double bred Scottish Neff on the top side with Hasalz and Baltimore and Balist on the bottom side offers the power genetics and then you have FSS Polled Hendrix, Usch, SH Romulus, Siegfried, Antonius and Smithbilt Molson that bring the maternal traits; all in a blended pedigree backed by years of proven performance.

Gatton's pedigree tells what you should expect and his individual data tells you what he is: a birth weight of 89 pounds, actual weaning weight of 738 pounds at 210 days and a actual yearling weight of 1320 pounds at 381 days. Gatton's EPD's then show you what his blended pedigree should give you; so you find CE, MCE, marbling, API, TI and docility all in the top10% of the breed with growth numbers well within the range of acceptance.

So Gatton checks a lot of boxes when you evaluate him by numbers and pedigree and then you look at his phenotype: smooth shouldered, depth of rib that extends forward for depth in the heart girth, strong topped, great hip structure, sound feet and legs all on a moderate 6.25 frame. You add that he is smooth polled and he is a COMPLETE PACKAGE. Simmentals of Texas and Bouchard Livestock International, the Canadian distributor for Gatton Semen, is proud to consign two lots of 5 units to the FCSF Fundraiser Auction to support the activities of the Foundation.



Bouchard Livestock International
Brian Bouchard 403-813-4999
www.bouchardlivestock.com

Simmentals of Texas
Fred Schuetze 817.894.0563
www.simmentalsoftexas.com

12

5 Straws of Sibelle Sugar Ray 25F

25 Jan 2018

GHBE 25F CSA #PT1256414

VIRGINIA WALKER 97W
Sire: SIBELLE SPARTACUS 8A
BBBG FRANCESCA 2S

ANCHOR D IMAX 250Y
Dam: SIBELLE POL CROCUS 20D
SIBELLE POL MOLLY 7B



ACT	BW	Adj WW	Adj YW	EPD	CE	BW	WW	YW	MCE	MWW	MILK
	106 lb	951 lbs	1527 lbs		3.4	5.3	73.1	101.8	2.4	75.9	39.4

Polled full fleckvieh. USA/ Canadian and AUS qualified. A pen leader in performance, Sugar Ray was purchased as the high seller from the Synergie Bull Sale where he combined a soft build with excellent muscle expression, dark red color pattern and thick hair coat. He is smooth made and very fluid in his muscle movement on a nice foot. His calves lead thier respective groups in weaning weight and muscle dimension, depth of body, strong bone structure and have not slowed down. His daughters show tremendous promise with added mass while maintaining feminine features. We can't wait for Sugar Ray to leave his mark as he matures into a very impressive herd sire.



Donated By:
Johnston Ranching
Byron, Bernice & Wyatt Johnson
Byron cell 780.806.3560
www.wjsimmentals.com

Beechinor Land & Livestock
Stefon & Rebecca Beechinor
403.597.4001

13

5 Straws of ALLM Colossal 25U

8 Feb 2008

ALLM 25U

CSA # 693891



Donated By:
Ferme Gagnon Inc
Gagnon Family
Francis 819.428.3502
www.fermegagnoninc.com



PRL HOUSTON 005H
Sire: BBBG WRANGLER 3S
IPU 4G FRANCESCA 98N

SHAWACRES JAHARI 50L
Dam: FGAF ADRIA 126P
FGAF LEGEN'S CHARM 743K

ACT	BW	Adj WW	Adj YW	EPD	CE	BW	WW	YW	MCE	MWW	MILK
	103 lb	731 lbs	1480 lbs		-1.2	7.6	81.8	113.8	-1.8	82.5	41.6

Colossal needs no introduction in the industry. His progenies are highly in demand. A rare opportunity to buy his semen. Genetics only value over time.

14

3 Straws of Elm Tree Zander 11Z

27 Jan 2012

ETF 11Z

CSA # 761167



Donated By:
Elm Tree Farms
Glenn & Pamela Wotten
705.878.1713
www.elmtreefarms.com



MF MR. EVAN 14P
Sire: CROSSROAD RADIIUM 789U
CROSSROAD PANDITA 308P

BEL STEWARD 2ND
Dam: RRV ULENA 2U
RRV SARAH 22S

ACT	BW	Adj WW	EPD	CE	BW	WW	YW	MCE	MWW	MILK
	93 lb	843 lbs		8.5	3.5	60.9	76.8	-0.7	66.0	35.5

Elm Tree Zander 11Z, or "Lenny" has been our go-to guy for almost 10 years, and we are pleased to offer him for the first time in the FCSF Foundation Auction. He's taken us on quite a journey, starting out as the anchor to our show string for two years, being named Champion Bull at the 2012 NAILE Fullblood Show in Louisville and the 2013 Royal Simmental Show in Toronto. Between him and his dam Ulena, they have cemented themselves in our pedigrees for many years to come, and are certainly the two biggest influencers our herd has seen to date. He's a special one to us, and we are excited to see his impact in more herds than ours. Semen is qualified for Canada and the US, stored at DMV GenetiQ in Quebec.

15

5 Straws of Crossroad Connected 12G

6 Jan 2019

CRF 12G

CSA # BPG1266301



Donated By:
First Class Marketing
Darnell Fornwald
403.795.8030

www.firstclasscattlemarketing.com



SIBELLE SPARTACUS 8A
Sire: CROSSROAD RED STETSON 9E
IPU MS. CODE RED 249A

KOP CROSBY 137W
Dam: PERKS BLACK DOLL 1121Y
WFL MISS 21F DOLL 20P

A	BW	Adj WW	Adj YW	E	CE	BW	WW	YW	MCE	MWW	MILK
C	94 lb	801 lbs	1414 lbs	D	4.8	3.8	84.4	121.9	4.3	76.0	33.8

Connected was one of the most talked about bulls in 2020 we purchased him from Crossroad Farms with Swan Lake Farms and Cornerstone Cattle Co for \$100,000. Connected is one of the stoutest, biggest middled, black blaze faced bulls we have seen in years but still shows an incredible amount of structural soundness and walks at top of a perfect foot. Reports on Connected calves, they come easy and have a ton of vigour and grow to them. Many producers saying they are the stoutest calves they have ever raised, tons of look and performance and the best calves in their pastures. This will be the last semen to sell in 2021. Homo Polled, Hetero Black.

16

5 Straws of Rubys Turnpike 771E

31 Jan 2017

FGN 771E

CSA # BPRS1281593

Donated By:
CW Saltwater
Simmentals
Adam White
902.582.2511



GW-WBF SUBSTANCE 820Y
Sire: WBF SIGNIFICANT B132
WBF HEBE X376

OVAL F RINGLEADER R579
Dam: RUBYS MISS CLEO 240Z
RUBYS MISS CLEO 964W

A	BW	WW	E	CE	BW	WW	YW	MCE	MWW	MILK
C	95 lb	827 lbs	D	9.3	3.7	94.7	160.2	4.0	65.9	18.5

Turnpike was the most talked about bull at the 2018 National Western and if you saw him stomping the dirt in the Pepsi Centre, it was easy to understand why. A rare blend of power and mass with undeniable presence. He is big footed and has excellent testicles. Equally intriguing is Turnpike's unique, and outcross pedigree and well above average EPD spread. Double Bar D and Werning Cattle Co. purchased Turnpike as the high selling lot in Rubys bull sale. Turnpike's Progeny consistently rise to the top on both sides of the border.

17

5 Straws on PWK Max Factor 137Y 17B

15 Jan 2014

PWK 17B

CSA # PG1117010



Donated By:
Leewood Ranch
Arnold Families
Colt 780.581.8328
Howard 780.787.2275
www.leewoodranch.com



LFE BS LEWIS 322U
Sire: MRL TO THE MAX 70Z
MRL MISS 477U

BLACK BARON
Dam: KRGS MS REDMAN
WINDMILL MS REDMAN 191R

A	BW	Adj WW	Adj YW	E	CE	BW	WW	YW	MCE	MWW	MILK
C	99 lb	864 lbs	1488 lbs	D	4.8	5.4	75.9	103.8	2.8	68.3	30.3

Max Factor is as consistent as any bull we've ever used. His calves come easy, polled with powerful growth. His calves impressed us at the Workman Dispersal in 2017 and continue to impress us with each calf that hits the ground at Leewood. Max sons and daughters are at the top of their pens, with many visitors picking his sons out of the bull pen. We used Max heavily again in 2019 and can't wait to try a few of his sons in 2020. He's a moderate framed bull that's very easy doing and has a disposition second to none. Max is a proven herd sire that will add thickness and doability to his calves.

18
A-B2 Packs of 5 Straws on
LFE Dare Devil 3238B

16 June 2014

LFE 3238B

CSA # PG1141991



Donated By:
McIntosh Livestock
Blair & Stephanie
McIntosh
306.441.7755
306.441.6889



LFE BIG DREAMS 512S
Sire: LFE RRS DIABLO 3112U
RRS KITTY 85R

LCHMN BODYBUILDER 7303F
Dam: LFE RS AMBER 2015R
LFE AMBER 27H

A C T	BW	Adj WW	Adj YW	E P D	CE	BW	WW	YW	MCE	MWW	MILK
	102 lb	803 lbs			7.7	3.0	64.5	86.3	6.2	55.5	23.2

We purchased Dare Devil from Lewis Farms in 2016. He was a sight unseen purchase on our part as it was our partner Jonny Klutz who was at the sale and fell in love with the bull. When "The Devil" arrived at our place we were sure impressed when we seen him in the flesh. Moderate in frame, very dark red in colour, and moved around like a cat! We still love the same things about him in 2021 that we loved about him in 2016, except now he has a production record that speaks volumes. He has produced many of our high selling red bulls in the past few years which solidifies his place as a potent breeding piece. Dare Devil stems from one of the most prominent and dependable maternal lines in the breed, the Amber family from Lewis' and his daughters performance thus far pays tribute to that great maternal lineage.

19

10 Straws of any Canadian
Qualified sire in the 2021 Alta Catalogue

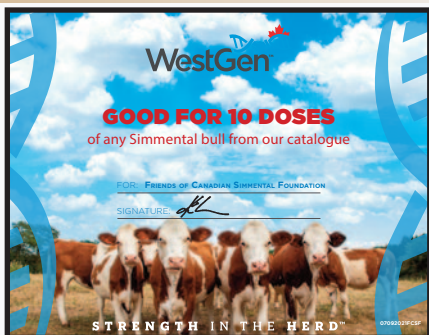
Here is your opportunity to secure 10 straws of any Canadian qualified sire in the Alta Genetics 2021 catalogue. The multi-breed lineup of beef bulls at Alta Genetics are each selected for in-demand characteristics such as fertility, calving ease, cut-out value, and growth performance.

Donated By:
Alta Genetics Inc.
Terry White
www.altagenetics.com
altacustom.com



20

10 Straws of any Simmental Sire in the 2021 WestGen Catalogue



Here is your opportunity to secure 10 straws of any Simmental sire in the WestGen 2021 catalogue.

Donated By:
WestGen

Kevin Graham 604.425.1890
www.westgen.com

21

Bullseye Pallet of Mineral



Bullseye has highly-trained Consultants, Forage Consultants and Management Consultants work with producers as part of the management team, seeing and understanding each operation first-hand in order to provide operation-specific direction and information that's informed, useful, unique to beef nutrition and helpful in improving the bottom line. Offer a gift certificate for 1 pallet of mineral valued at \$1500



Donated By:
Bullseye Feeds

Tom McNeely 780.679.7220
www.bullseyefeeds.ca

22

Full Day Walleye Fishing Trip & BBQ Supper



Full Day Walleye Fishing at One of Our Local Alberta Lakes
Includes:

- Rod, Tackle, Bait and Supplies
- Guided Service in Our Deluxe Lund Fishing Boat
- Guides for the day are the Rusylvia Crew experienced Walleye Fisherman (Three Time AYA Walleye Fish Tourney Champs, 5th place National AYA Finish @ Lake of the Woods and many more derby placings)
- Campfire Supper with AAA Alberta Beef Ribeye, Walleye Fillets, BBQ Potato/Onions, Caesar Salad, Garlic Bread and Refreshments

Learn the tips, techniques, and filleting skills while enjoying some entertaining stories and company.



Donated By:

Rusylvia Cattle Co

Ken & Josie Pashulka

Tyson, Riley, Taylor

780.741.2188

www.rusylviacattleco.com

23

1 Night Stay at the Legacy Inn - Grenfell



Located along the #1 Highway in Grenfell, SK, the Legacy Inn Grenfell is the perfect location for the Trans Canada traveler looking for a nice, quiet hotel. The brand new Legacy Inn is now open featuring 31 rooms. The perfect place to stay while attending a livestock event in the area. The Legacy Inn grounds have been beautifully landscaped with walking paths, putting greens and a play area for your pleasure and is also equipped with a food truck for the spring to fall seasons.

Buyer will receive one night stay in a King or Double Queen room depending on availability when booking.



Donated By:

Double Bar D Farms

Richard Dimler Family

Ken Dimler 306.697.7204

www.doublebardfarms.com

24

Bova Tech Ltd. - Embryo Flush Package



\$1500 Bova Tech Flush Package

Includes the following:

- drugs for stimulating donor
- flushing of donor
- all freezing and related costs

If flushing is done on farm, the client would pay for mileage. If flushing is done at our centre near Cochrane, the client would pay for board of the donor



Donated By:
Bova-Tech Ltd
Dr. Andres Arteaga DVM.
www.bova-tech.com

25

Davis-Rairdan - Embryo Flush Package



\$1000 Embryo Collection Package Includes:

- drugs to synchronize and super-ovulate donor
- breeding of donor
- embryo collection
- freezing of 6 resultant embryos from the flush
- flush to be done in-house at Davis-Rairdan ET Facility
- Does not include donor board, semen purchase and transport of donor to and from ET facility



Donated By:
Davis-Rairdan Embryo Transplants
Crossfield, AB
www.davis-rairdan.com

26

Bow Valley Genetics \$750 Embryo Flush or Semen Collection Credit



\$750 Credit for Embryo Flushing or Semen Collection
Bow Valley Genetics offers complete embryo collection and transfer services on farm or at our donor centre. In addition to embryo work we provide complete export to owners use semen collection at our new industry leading bull stud facility. New for 2021 is the addition of a location in Regina, SK this allows BVG to service customers easily across western Canada.



Donated By:
Bow Valley Genetics
Brooks, AB & Regina, SK
www.bowvalleygenetics.com

27

Alta Genetics Customer Collection \$500 Semen Collection Credit



Alta Genetics customer collection offers complete semen collection services from owners use to export qualified the facilities offered are second to none with the goal to produce a quality product that will help to propel your operation into the future.

When you think custom collection look to Alta the longstanding leader in semen collection based at Calgary, AB.



Donated By:
Alta Genetics Inc.
Terry White - 403.226.0666
www.altagenetics.com | www.altacustom.com

28

Canadian Cattlemen 1/2 Page Advertising Certificate



Canadian THE BEEF MAGAZINE
Cattlemen

Donated By:
Canadian Cattlemen Magazine
Mike Millar 306.251.0011
www.canadiancattlemen.ca

These days, some of the most interesting and revolutionary thinking in agriculture is found in the cattle business. Canadian Cattlemen magazine has been the place to learn about it all for more than 80 years. Published 12 times per year, take your advertising to the next level. The bearer of this certificate is entitled to a 1/2 page single advertisement in the Canadian Cattlemen Magazine to a maximum value of \$2,180

29

Simmental Country Marketing Package



Canadian
SIMMENTAL Country

Donated By:
Canadian Simmental Country
Canadian Simmental Association
403-250-7979

This is an excellent opportunity to promote a bull sale or other event and may be purchased by an individual, organization or sale group with an overall value of \$1300.

- Full page full color ad in Simmental Country magazine (does not include Commercial Country issues)
- Inclusion of your event in the monthly CSA Enewsletter
- Link to your Website or Catalogue from Simmental Country Website
- Eblast - Email announcement of your event to the CSA email contact list
- Hyperlink to your website / email in the Online Electronic version of the Magazine

30

Today's Publishing / www.buyagro.com

\$500.00 Credit towards catalogue design service, web design or listing at www.buyagro.com

Today's Publishing and T Bar C Cattle Co. Ltd. are proud to produce the Simmental Country and work with some of the most progressive breeders in the industry. We offer every aspect of livestock marketing from custom websites and sale catalogues to complete sale management. We are dedicated to high quality, strong integrity and continued success. Our goal is to help you market your program to its truest potential whether your operation is large or small. The listing service on buyagro.com offers a multi breed catalogue listing service that offering outstanding industry coverage for your sale catalogue.

TODAY'S
PUBLISHING

T BAR C
Cattle Company
Your Program...
Our Passion!

Donated By:
T Bar C Cattle Co / Today's Publishing
Chris Poley 306.220.5006
Bryan Kostuk 306.933.4200
www.buyagro.com



31

DLMS / DLMS FarmGate / Cattlevids.ca

\$1000 Service Credit towards an Internet Broadcast, Timed Auction or Pre-Sale Video Service

Direct Livestock Marketing Systems
We're Making the Connection
DLMS
www.dlms.ca

Cattle
vids.ca

Planning a sale? Reach the world with the help of DLMS the leader in online sale broadcasting, timed auctions and video services in Canada. Use this credit toward any Sale Broadcast, Timed Online Auction Sale or Pre Recorded video service offered by DLMS & Cattlevids.ca. This Credit is to be used by the end of the spring 2022 Bull Sale Season.

Donated By:
Direct Livestock Marketing Systems - www.dlms.ca
Cattlevids.ca - www.cattlevids.ca
Mark Shologan 780-699-5082

32

PEI Seafood Package



This PEI Seafood auction lot allows the lucky purchaser the opportunity to have \$250 worth of fresh PEI lobster, mussels, or scallops (or any combination thereof), delivered to their front door, no matter where they live in Canada. Whatever the choice, the seafood will be fresh off the water, and shipped by Purolator to your front door within a day of catch..... If you can't make it to PEI to try their world-famous seafood during the summer, this is almost as good!

M **MUTCH**
FARMS
ANGUS - SIMMENTAL

Donated By:
Mutch Farms
Stephen, Jennie,
Meredith and John Mutch

www.simmentalfoundation.com

Pg. 15

33

\$1000 Sale Credit to the 2021 Camrose Country Classic Sale



The annual Camrose Country Classic concentrates on sourcing leading females to enhance the front end of our customers programs. Some of the top end programs consign to this excellent sale that takes place in early December. The strength of this sale has risen to a level where you can enjoy studying the cattle and catalog from cover to cover and find breed leading genetics.

Donated By:

Camrose Country Classic Sale Group

Maxwell Simmentals
Glen 780.385.5552
Kevin 780.385.5625
Reece 780.385.5394

Johnson Ranching
Byron, Bernice &
Wyatt Johnson
Byron 780.856.2175

South Seven Farms
Ron, Linden & Nolan Stuart
Rob 780.632.9358

Tri-K Cattle Co
The Hodges Family
Keith 780.831.7999
Keiran 780.933.5637

Rancier Farms
Garth & Ang Rancier & Family
Garth 780.385.5313

34

\$1000 Sale Credit to Bonchuk Farms Fall 2021 Female Sale or Spring 2022 Bull Sale



Bonchuk Farms is a family farm located in the beautiful Birdtail Valley at Solsgirth, Manitoba. Current we run about 400 registered Simmental females. Along with the cattle, we also have 8,000 acres of crop land that we farm into wheat, oats, barley, canola, and grasses for pasture and hayland.

Our herd consists of polled and horned fullbloods, full-flecks, red and black purebreds. We are continually striving to develop our strong walking herdbull battery that complement a vast AI and embryo transplant program.

We look forward to supporting the FCSF with this \$1000 credit to either our Fall 2021 Female Sale or Spring 2022 Bull Sale. If you are ever in MB and have time for a visit give us a call or just stop in. The coffee is always on and the beer is always cold.



Donated By:

Bonchuk Farms - The Bonchuk Family

Dace & Marnee 204-842-3706 or 204-773-0467

Wayne & Charlene Bonchuk 204-842-3859 or 204-796-0004

Tyler, Holly & Family
www.bonchukfarms.com

35

Allflex AWR300 Wand Reader



The AWR300 Reader is the next generation EID stick reader and features a huge memory with a large back-lit display. The AWR boasts an ingress protection, rating of 1P67. It is lightweight, well balanced and comfortable in the hand. Includes a rugged hard-sided plastic case. Retail price of \$2,200

Donated By:

AllFlex Livestock Intelligence

Dave Lehman 780.305.6477

www.allflex.global.com



Livestock Intelligence™



Animal Health Intelligence

36

25 Simmental CCIA RFID Tags & CCIA Swag Pack



1 Bag of 25 Simmental CCIA RFID Tag's Plus

CCIA Swag pack including - 1 weather station, 1 toolbox, 1 pair of leather gloves, one set car charger with tag.



Donated By:

Canadian Cattle Identification

CCIA - Anne Burgess

403-275-2083

www.canadaid.ca

37

\$250 gift certificate for Genomic Services Testing

Get a head start on testing your bulls for the 2022 sales with this \$250 gift certificate.

Donated By:
Neogen
Edmonton, AB
www.neogen.com



38

\$200 gift certificate to Creekside Greenhouse Flowers

Everything from Hanging Baskets, Potted Plants, Annuals and Vegetables the Creekside Greenhouse has a huge selection for any yard and garden. Operated by Terry and Lionel Kaskiw this gift certificate is transferable so a great ideal for a gift! Shipping is available call for details.

Donated By:
Arrow Creek Simmentals
Lionel & Terry Kaskiw
204.483.0531



39

Leather Purse



This ginger coloured bag is beautifully tooled with extra leather detailing around all the edges. Wear over your shoulder or use the longer strap as a cross body. So many use for this classy stylish bag! 17" x 12"

V-5 SIMMENTALS

Donated By:
Barb Vance
Kanata, ON
613 839-5274



40

Cowhide Jewelry Case



This is a large cowhide jewelry case with a zip closure and a velvet lining. There are lots of places to keep your precious items organized and safe. You can hang your necklaces and keep your rings organized. 12" x 12"

Donated By:
Cowgirl Sisterhood Boutique
Arlana 780-650-2360
Lynnaea 250-371-7899
www.cowgirlsisterhood.ca



41

Montana Silversmiths Necklace and Earrings



Montana Silversmiths makes a variety of silver products, but Western-themed jewelry is their biggest seller. The company also produces trophy belt buckles. This beautiful black and silver necklace and dangle earrings set would make an excellent addition. Silver chain measures 8 inches in length.

Donated By:
Bruce Holmquist
639.314.4613

42

Classic Sterling Silver Cuff Bracelet



If you are looking for a special gift for someone or wanting to add a classic sterling silver piece to your collection this piece will complement any outfit.



Donated By:
High Country Cattle Services
Rob & Deanne Young 780.542.0855
www.highcountrycattle.com

43

Simmental-Blazing a Trail
original painting by artist
Amanda Bushey.



"Simmental-Blazing a Trail" An original 18x24 Painting by local artist Amanda Bushey Follow Amanda's Facebook page @Abdesignsulove



Donated By:
Keystone Livestock
Scott & Emily Matthews
819-993-5187

44

Simmental Pasture Queen Paintings
by artist Kristin Kueber



Original acrylic painting 20 x 24 inch on birch panel from artist Kristin Kueber
www.kristinkueber.com



Donated By:
Sun Rise Simmentals
Evan Cuss
306-534-4700

45

Bernie Brown Print



A signed and numbered Print
by Canadian Western Pencil
Artist Bernie Brown titled "A
Boy and His Dog".

Donated By:
Oberg Auction Services
Don & Angela Oberg
780.678.6926

46

Colorful Calf Painting



A colorful calf painting created by local
Manitoba artist Rey Fritsch



Donated By:
Twin Meadows Livestock
Pat & Tracey Wilcox
204.723.0029

47

Canvas Print by Tia Schram



This 30' x 20" black and white clipper blade print will look impressive in your barn office, college dorm room, or living room wall. Perfect for the livestock enthusiast in your life.



Donated By:
North Hill Simmentals
Schram Family
780.796.2223



Donated By:
Seven D Media
Tia Schram
780-914-4532

48

50th Anniversary Canadian Western Agribition Merchandise Package and Tickets

Canadian Western Agribition is back and in full steam for our 50th Anniversary November 22-27th. Included in this 50th Anniversary package is a CWA labeled hoodie (size can be changed) a set of wooden coasters, 2 tickets to the Maple Leaf Finals Rodeo for the Thursday November 25th performance and 2 CWA admission passes good for any day from November 22-27th.

Donated By:
Canadian Western Agribition
www.agribition.com



49

CSA Mens Merchandise Package



1 New Bright Red Simmental pullover hoodie, 1 Tri color Simmental Baseball Cap, Set of 3 Callaway Golf Balls, 1 Large CSA Calving Book (clothing sizes can be changed after purchased)

50

CSA Womans Merchandise Package



1 New Deep Purple Simmental Simmental Hoodie, 1 pink neon CSA Baseball cap, 1 bright white contigo coffee mug, 1 large CSA Calving book (clothing sizes can be changed after purchased)

51

CSA Youth Merchandise Package



1 OGIO high quality Backpack and 1 unisex Xsmall (Adult) Heathered Grey CSA hoodie



Donated By:
Canadian Simmental Association



52

CSA Youth Merchandise Package

1 New youth pair of CSA labeled Stormtech Fitting Pants, 1 neon green CSA Baseball cap (pants sizes can be changed after purchased)



53

4 Custom Etched Tumblers



4 Custom etched tumbler, tumblers are etched with CSA logo.



MANUFACTURING INC.

Donated By:
Ketchum Manufacturing
613-342-8455 - Ketchum.ca

54

BRKY Livestock hoodie & Cat-Eye Creative Simmental Heifer rear view mirror hanger



Check out the cool Brokey Livestock fashion hoodie in the size and colour you want. (S-XXXL - Gold, black, navy or grey) Plus you can represent as you drive down the road with the Cat-Eye Creative Simmental heifer rear view mirror hanger.

Donated By:
BRKY Livestock
Cooper Brokenshire &
Tateum McPherson
306.461.9448

55

Custom Hand Painted Picture on Barn Wood or Skull



Custom creation of your choice on barn wood or skull to the value of \$300. Can choose from pieces available on the Sandi's Custom Creations Facebook page or send in a picture for Sandi to create on Barn wood or Skull.

Donated By:
Sandi's Custom Creations
Sandi Kushner 306.948.7418



56

Custom Circle Welcome Home Sign



Unique warm welcome to any farmhouse. Custom made by Karen Mack

PRAIRIE WIND FARMS

Donated By:
Prairie Wind Farms Ltd
Wes & Karen Mack
306.634.4410 or 306.421.1853

57

Custom Coaster Set



Have a hard cattlemen/cowboy to buy for? This bull coaster set would make the perfect addition to any western home! This bull brand was cut by a CNC laser, from a photo of a herd sire produced at Ty's family farm. Each coaster hand cut and branded with our handmade brands, which are then sanded and sealed.

RANCH REVIVAL

Donated By:
Ranch Revival
Ty & Ariel Wilson - 403-586-5017
www.ranchrevival.ca

58

Hand made toy barn, panels and farm animals

A beautiful custom made wood toy barn with sliding doors and top that folds open. Also comes with a Big Country Ranch set that includes a hay ring, hay bale, squeeze chute, 7 piece corral set and a black baldy cow and calf



M&J Farms

Donated By:
M&J Farms
Miles and Bonnie Glasman
204.773.3279

59

Little Busters Stall Set



The Show Cattle Stall Display Tie Rail & Side Panels by Little Buster Toys allows future junior livestock enthusiasts to exhibit and display their cattle all year long. Also includes a shavings bed, mat, and four feed pans. and a starter herd of 2 animals. Full metal construction.

HIGH COUNTRY CATTLE SERVICES

Donated By:
High Country Cattle Services
Rob & Deanne Young 780.542.0855
www.highcountrycattle.com

60

2 Childrens Books by CJ Brown



Childrens books The Cowbook and Counting Cows. Two beautifully written and illustrated books by well known artist CJ Brown. The Cow Book is an alphabet book about cows from around the world. Counting Cows is a book to count from 1 to 12 and is filled with cows and hidden numbers to find"

Donated By:
Keystone Livestock
Scott & Emily Matthews 819-993-5187





The beautiful picture was submitted to the CSA as part of a photo contest and was chosen as the cover shot for the Foundation sale catalogue in 2021. The Picture was taken and submitted by Hannah Robson of Lockhart Valley Simmentals took this photo on their pasture land just south of their house. A lot of the reactions that Hannah gets about this photo is, "wow! Your place sure looks a lot like British Columbia". This outstanding scenery will be printed on 36 X 24 canvas and would make an outstanding edition to any office or home.



Canvas Printing Donated By:
Canadian Simmental Association
Simmental Country Magazine
www.simmental.com

2022 Back Cover of Friends of Canadian Simmental Foundation Auction Catalogue - Your chance for a Unique Advertising Opportunity. Purchase the back cover of the 2022 Foundation Auction Catalogue. It is printed for the auction, distributed to all of the active members of the Canadian Simmental Association, e-blasts and circulated through email and social media reaching over 5000 cattle enthusiasts.



Donated By:
Friends of Canadian
Simmental Foundation
www.simmentalfoundation.com



3 Great Ways you can Support the Foundation this year!!

1. Purchase tickets on the Donation Heifer.

Remember for each \$20 Ticket you purchase you will get a chance in the draw for the Bred Heifer.

- 2.*** View the catalog and chose from all of the outstanding items available in this year's sale. This year we are doing an online Timed FarmGate sale on DLMS.ca you can bid your self, call any of the sale staff or the FCSF Board to bid on your behalf. Remember with your support the Foundation will continue to provide Scholarships and support the Youth Initiatives in the Simmental Breed.

- 3.*** The Friends of Canadian Simmental Foundation is an opportunity to leave your legacy in the Simmental Industry. Through a memorial donation, a living gift or a bequest through a planned estate gift you can support the foundation in perpetuity. For assistance with the sale or more info about the Friends of Canadian Simmental Foundation contact any of the FCSF Directors listed on page 3.

The Friends of Canadian Simmental Foundation belongs to all of those that had the vision to believe in bringing the Simmental breed to Canada, those that supported and have developed it over the past 50 years, and those that see the value it brings to the generations of the future.



2020 Scholarship Winners

The Friends of Canadian Simmental Foundation is honored to administer 3 exciting post-secondary scholarships and bursarys. The Friends of Canadian Simmental Foundation will be providing two \$3,000 scholarship to promising young students pursuing a degree or certificate at an accredited institution. The Dr. Allan Dixon Scholarship will be 2 scholarships of \$2,000 each and the Trevor Vance Scholarship is one award of \$2000

The Friends of Canadian Simmental Foundation recognizes the importance of supporting youth in agriculture and their goals of advanced education. The scholarship program is one of the ways that the Foundation intends to support youth and the future of the livestock industry.

Please go online to www.simmentalfoundation.com to find the current application form that can be used for all three of the scholarships for the 2021-2022 academic year. Eligible applications will first be considered for the Friends of Canadian Simmental, then those remaining for the Dr. Dixon and the Trevor Vance Memorial scholarships.

The deadline for applications is September 30, 2021



2020 Friends of Canadian Simmental Foundation Scholarship Winner

Bailey McCormack

Bailey McCormack is 17 and currently enrolled in the Bachelor of Science program at the University of Regina. She calls Grenfell, Saskatchewan home where she is actively involved with her family's purebred Simmental and Angus operation at McCormack Family Ranch. Bailey's participation in 4-H the last twelve years led to her involvement in the Simmental breed and she is incredibly thankful for the opportunities it has presented her with. Bailey took a position on the Saskatchewan Young Canadian Simmental Association executive board around five years ago but have been showing Simmental cattle all her life. Bailey is grateful to have been able to attend multiple provincial shows as well as two national shows where she made many friendships and met the future of the Simmental breed! Bailey would like to say a heartfelt thank you to the Friends of Canadian Simmental Foundation for their contribution to her future and she hopes to one day be able to give back to youth like herself!



2020 Friends of Canadian Simmental Foundation Scholarship Winner

Sadie Anwender

Sadie Anwender is from Radville, Saskatchewan where her family owns and operates Anwender Cattle Company along with her own herds- Me 'N My Simmentals & Shorthorns. Sadie has grown up in the industry and been an active member of many junior programs at provincial and national levels. She kept busy with many sports, volunteering and leadership groups while in high school. Sadie has been involved in the Simmental breed since purchasing her first purebred female in 2013. She most enjoys the camaraderie and enthusiasm for advancement within the breed. She is currently a director on the Saskatchewan YCSA. This fall, Sadie entered her third year of Business Administration at the University of Regina. She plans to pursue an accounting major with hopes to one day operate her own business. Sadie looks forward to continually growing her herd in both breeds. She is appreciative of the foundation for awarding these funds and would like to thank all who donate throughout the year to make the scholarships possible.



2020 Dr. Allan A. Dixon Memorial Scholarship Winner

Jessica Sperber

Jessica Sperber is currently working toward a PhD in ruminant nutrition at the University of Nebraska-Lincoln, her research focusses on feeder cattle nutrition and greenhouse gas emissions. Jessica was raised on a cow-calf and grain operation in central Alberta and completed her MS at West Texas A&M University in meat science and beef carcass quality. Jessica currently serves as the Vice President of the Young Cattlemen's Council and was a 2016 Cattlemen's Young Leader. She hopes to use her technical expertise and training to obtain a career with an allied industry partner in the beef sector. Jessica has extensive interest in feeder cattle growth and aspires to explore innovative ways to feed the ever-growing population while continuing to produce the same high-quality beef that consumers love. Jessica wants to thank the Friends of Canadian Simmental Foundation for their generous support of young beef industry professionals.



2020 Dr. Allan A. Dixon Memorial Scholarship Winner

Ryan Edwards

Ryan Edwards and his family runs a purebred and percentage Simmental operation just east of Strathmore, Alberta. Their operation heavily utilized artificial insemination and embryo transplant to improve the quality of their herd. Ryan's family consigns a few calves each year into sales. Ryan is currently attending the University of Calgary where he is studying biology and chemistry, looking to focus more into animal biology. Ryan would like to take this opportunity to thank Friends of the Canadian Simmental Foundation for recognizing the importance of supporting youth and for giving him the opportunity to further his education.



2020 Trevor Vance Memorial Scholarship Winner

Jacey Massey

Jacey Massey is 18 years old and from Strathmore, Alberta, Canada. She has grown up showing and raising purebred Simmental cattle with her parents, Tim and Derri Massey. Jacey has also recently started her own herd of purebred Hereford cattle. Jacey has thoroughly enjoyed owning and operating New Trend Cattle Company alongside her parents. She has developed a deep passion for the livestock industry through these endeavors and they have molded her into who she is today and has also greatly impacted her future as well. Jacey is currently furthering her passion for the industry at Hutchinson Community College where she is working towards her Associates degree in Art with an emphasis in Agriculture Communications and is also on the Livestock Judging Team. After receiving her degree in Hutchinson, Jacey plans on transferring to either Kansas State University or Oklahoma State University to further her education and to continue her career on a competitive collegiate livestock judging team. Jacey would like to thank Friends of the Canadian Simmental Foundation and the Vance family for granting her this great honor in receiving this scholarship.



Thanks to all the 2019 donators, bidders, buyers and supporters of the
Friends of the Canadian Simmental Foundation. Your support is greatly appreciated!

4 Matt Simmentals	Canadian Cattlemen	Ferme BMS Inc.	Labatte Simmentals	Riskan Hope Farms
Aimee Van Loon	Canadian Simmental Association	Ferme Gagnon	Lazy Creek Farms	River Morse
Alexis Stoddard	Canadian Simmental Country	Ferme Larose	Lewis Farms	Rob Jamieson
Alliance Simmental Farms	Canadian Sires	Ferme Sibelle	Mader Ranches	Ron Nolan
Allison Booth	Canadian Western Agribition	Ferme Sibelle Fleck	Mar Mac Farms	Rose Creek Ranch/Schwengler
Alta Genetics Inc.	Carew Simmentals	First Class Cattle Marketing	Marc Boisvert	Rosemead Farms
Anchor D Ranch	Carpathian Cattle Co	First Class Marketing	Mark & Joanne Shologan	R-Plus Simmentals
Andre Beaumont	Cattlevids.ca	Flying F Ranch	McCormack Family Ranch	Sandra Bernard
Artisan Farms	Clinique Veterinaire	Francis Beaumont	McMillen Ranching	Sandra Berthiaume
Bar 5 Stock Farm	Centre-du-Quebec inc.	Goodview Angus & Apparel	Meadow Acres Farms	Select Sires Generation
Barb Judd	Corrie Lewis	Greyledge Simmentals	Megan Prouse	Shane Williams
Barlee Simmentals	CRM Simmentals	Harvie Crest Cattle Co	Mike Millar	SIBL Simmentals
BBBG Simmental Group	Czech-Mate Livestock	Helen Jamieson	Millbrook Farms	Stan Church
Bellavas	Danike Meyer	High Country Cattle Services	Mutch Farms	Starwest Farms
Ben Wright	Datamars Inc.	Hi-Tech Farms	Neogen	Sullivan Simmentals
Black Cattle Co	Davenor Farms	Ivan Smith-SIBL Simmentals	New Holland Agriculture	Sun Rise Simmentals
Black River Farms	David Ennis	J Syvret Co Limited	North Hill Simmentals	T Bar C Cattle Co
Bohrson Marketing	David Spaulding	Jacob Fischer	Northern Livestock Sales	Today's Publishing
Bonchuk Farms	Davis-Rairdan Embryo	Jamieson Genetics	Norwood Family Farms	Talbot Marketing
Boot Hill Gallery	Deeg Simmentals	Jaydawn Farms	Optimum Genetics Ltd.	Todd Simmentals
Bouchard Livestock	Derek Westman	Jean-Francois Leblond	Peter Sweeten	Ultra Livestock
Boundary Ranch	Dirt Road Chic	Jetstream Livestock	Pieschel Farms	V-5 Simmentals
Bova-Tech Ltd.	DLMS	KCH Cattle Co	Pine Creek Simmentals	Velian Farms
Bow Valley Genetics	Dobbie Simmentals	Keitha Donovan	R & B Ranch	Weaver Order Buying
Broken Arrow Cattle Co	Dorran Marketing Inc.	Ketchum Manufacturing Inc.	R Plus Simmentals	Weston Meredith
Brooksland Farms	Dunraven Simmentals	Keystone Livestock	Ranch House Designs	Wyvern Cattle Co.
Bruce Holmquist	Elm Tree Farms	KLW Farms	Rancier Farms	Young Canadian Simmental
Canadian Cattle	Emily Grey	Krista Whalen	Red Sorrel Photography	Association
Identification Agency	Erich Kern	KT Ranches	Red Top Livestock	
	Etienne Bellavance	Kulyk Simmentals	Rhonda Barkley	

WESTERN LITHO
P R I N T E R S

**SERIOUSLY
SMART PRINTING**

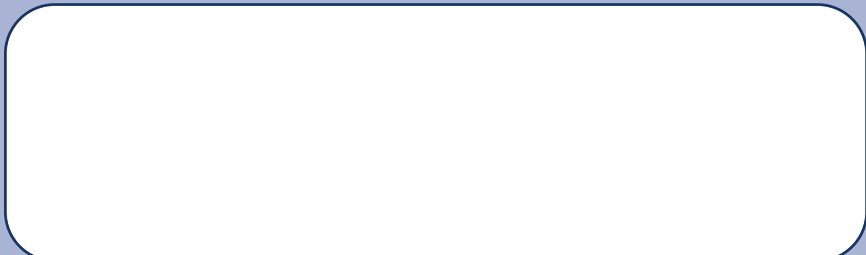
Serving Saskatchewan
businesses with unprecedented
speed, efficiency and accuracy

300 Dewdney Avenue | Regina, SK S4N 0E8
Bus: **306.525.8796** | Toll Free: 1.877.475.4846
Fax: 306.565.2525 | www.westernlitho.ca

Pg. 23



#13, 4101-19th St. N.E.
Calgary, AB
T2E 7C4



First Class

FULL SALES MANAGEMENT | CONSULTING | ORDER BUYING SERVICES
SEMEN & EMBRYO GENETIC MARKETING

View the website for our complete upcoming sale dates

www.firstclasscattlemarketing.com

a team that is
DEDICATED
to travelling the *Miles*
to help find your next herdsire,
donor cow or show heifer



Darnell Fornwald
(403) 795-8030



Shay Martindale
(780) 812-4581



Jonathan Karsin
(204) 870-0329

First Class
cattle marketing